



Wordly is a cloud based platform that provides realtime simultaneous interpretation from one language to multiple languages, all powered by AI.

This document provides instructions on how to add languages to your Windows machine to enable TTS to be used on Wordly.

## Instructions:

**Step 1:** Open Settings in Windows. Search for Language Settings.

**Step 2:** Click on Add a preferred language.

**Step 3:** Search the language package you need to add (example here is Spanish - Mexican).

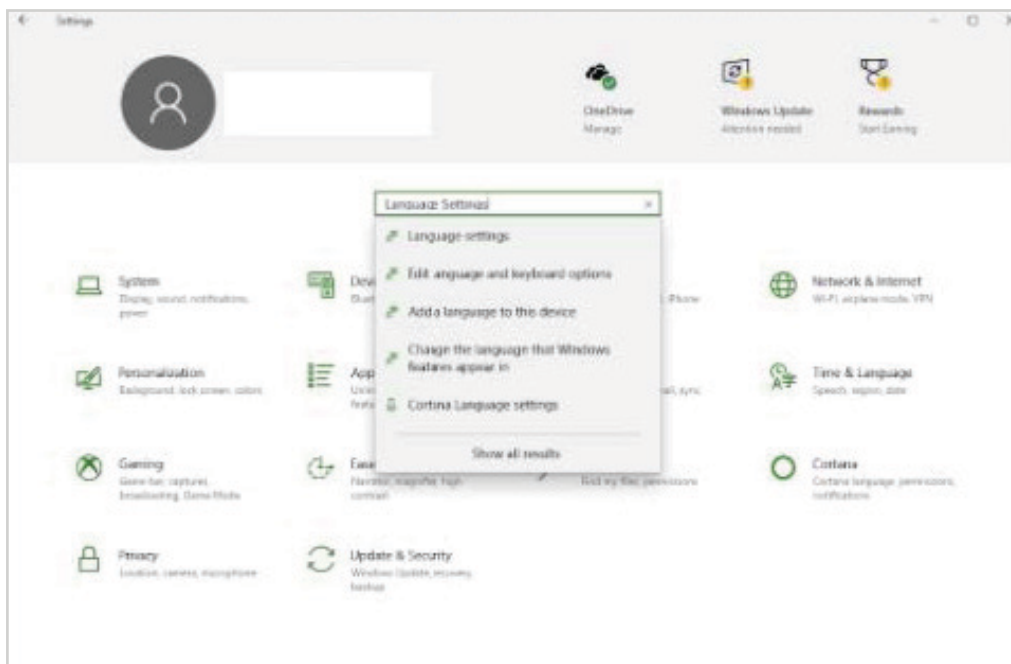
**Step 4:** You can use the language once the package is downloaded.

**Step 5:** Make sure the Text to Speech is selected.

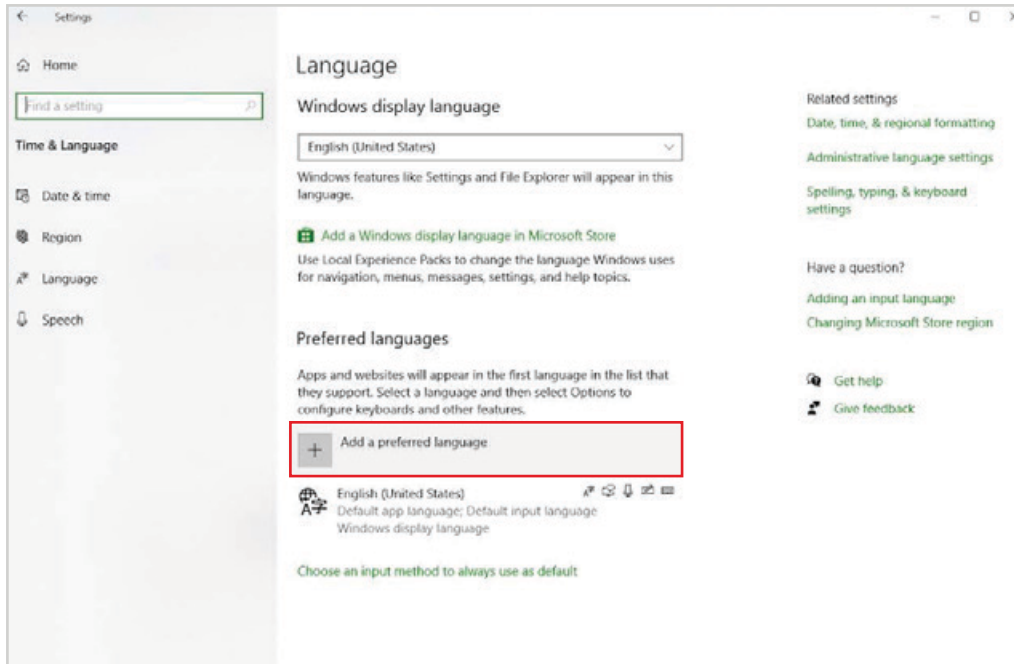
**Step 6:** Package will start downloading (Could take up to 15 mins).

**Step 7:** You should see the icons on the downloaded package like shown below.

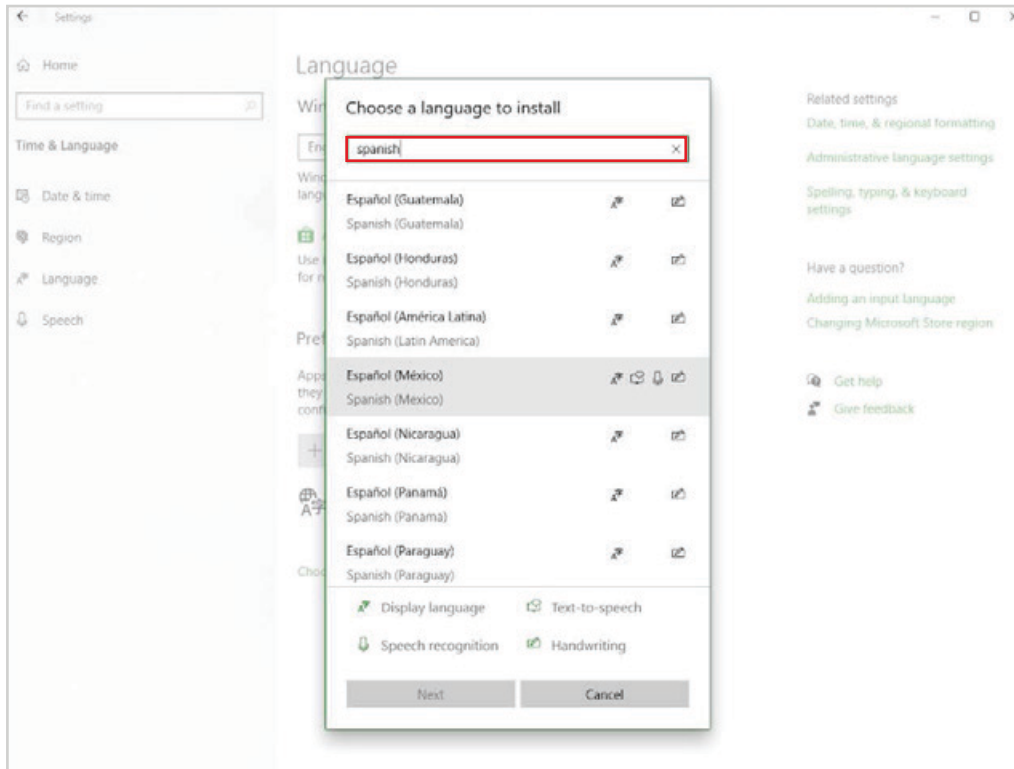
### Step 1:



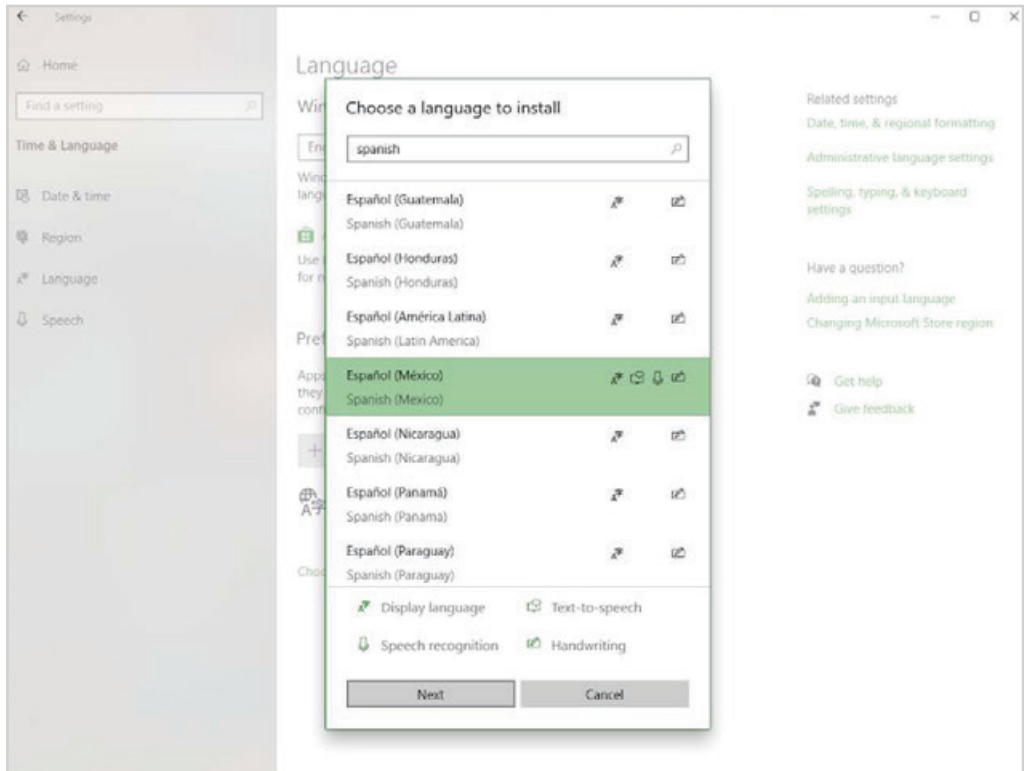
## Step 2:



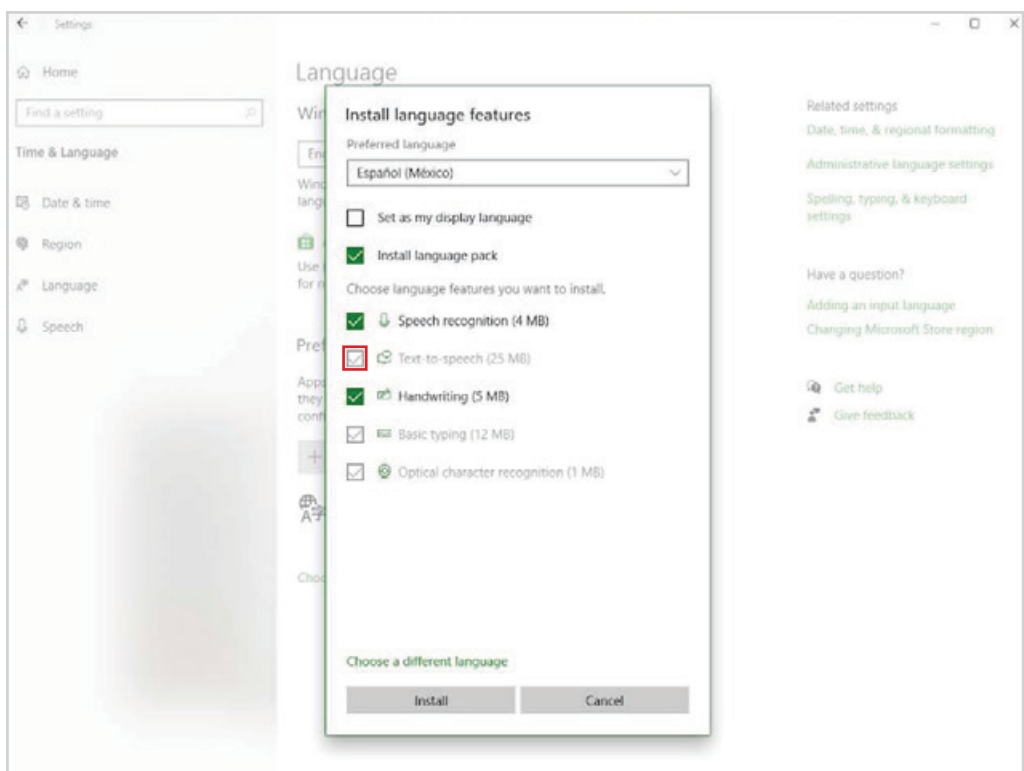
## Step 3:



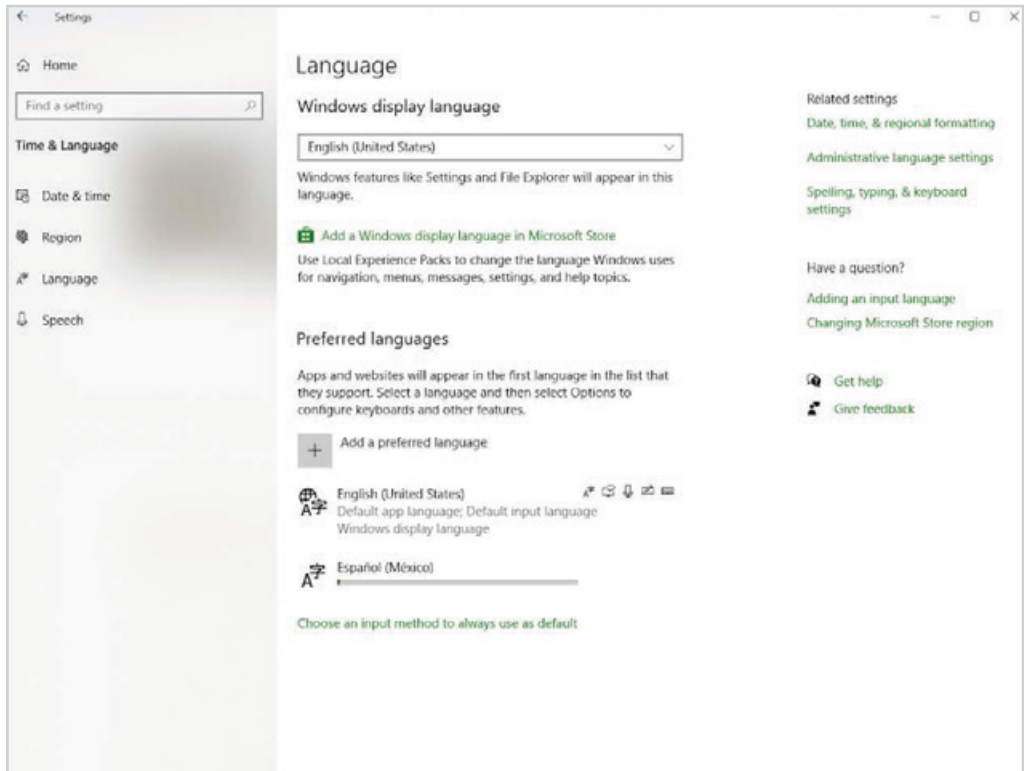
### Step 4:



### Step 5:



## Step 6:



## Step 7:

